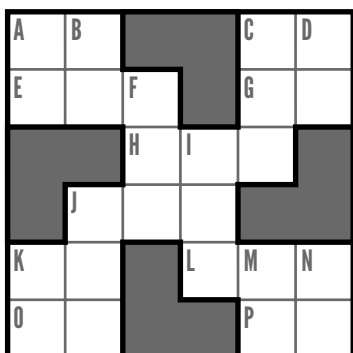
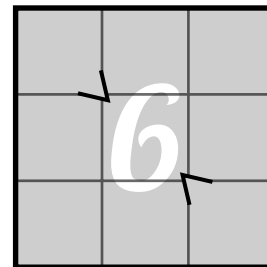


Fit all of the pieces into the 3x3 block without rotating or flipping them. Greater-than symbols should open toward the bigger number, and point at the smaller number.

The triangle braces must point toward the smaller of the two neighboring digits.



Today's feature puzzle is a Numcross/Cross Figure puzzle. Use the clues provided to fill the grid with digits. No entry may begin with a 0.

Across

- A. K across - 5
- C. A perfect cube
- E. An anagram of J across
- G. One-third of A down
- H. J down x 6
- J. A palindrome
- K. K down - 1
- L. C across x 5
- O. One-half of G across
- P. Another perfect cube

Down

- A. C across in reverse
- B. F down - I down
- C. D down x 3
- D. P across + 10
- F. K down x 2
- I. One-half of C down
- J. B down x 2
- K. C across x 3
- M. A perfect square
- N. C across x 2