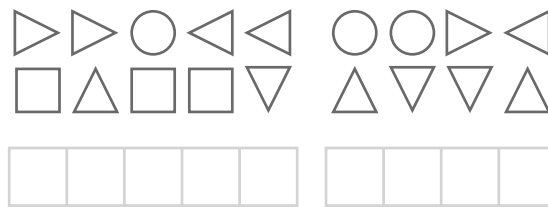
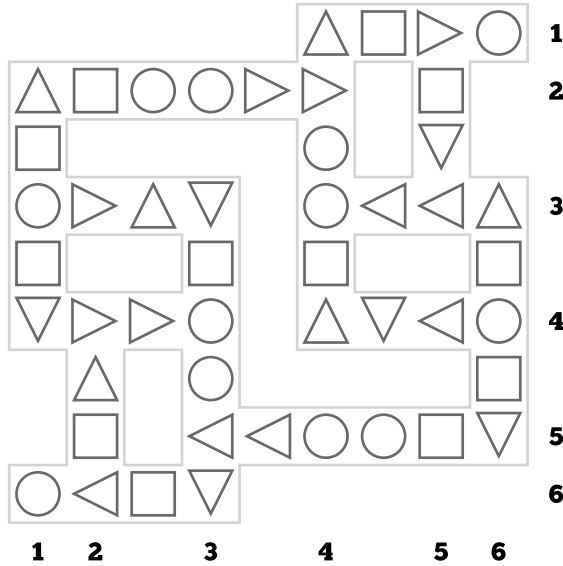


## Day 1: Key (Shapeword)

In Shapeword, solve the clues provided and place their answers into the grid. All of the answers use the same bank of nine letters. As you solve, shapes in the grid's cells will help you create a key. Use the key to decode a phrase that Dave might use to describe his everyday notebook.

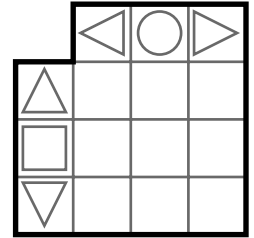


## Across

- 1 Deform
- 2 Game piece with spots
- 3a Sightseeing trip
- 3b Length of time
- 4a Plant part
- 4b Garden material
- 5 Application such as Word or Notepad
- 6 Press

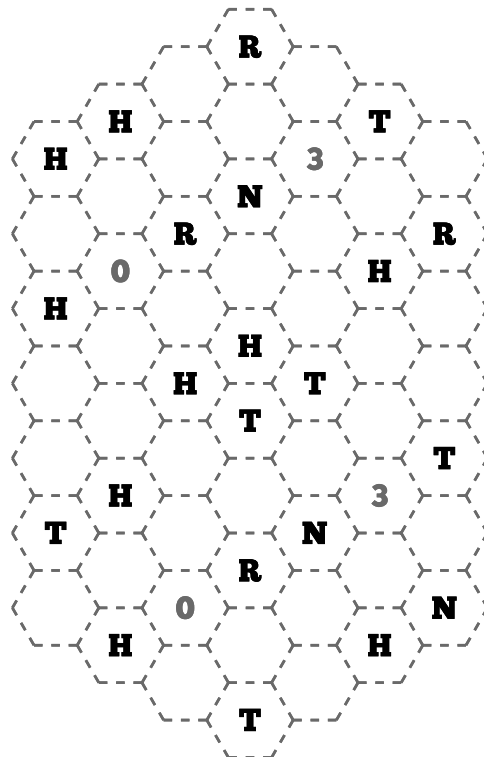
## Down

- 1 Stave off
- 2 Stench
- 3 In a state of decay
- 4 Line or grid style
- 5 Moody film genre
- 6 Machine part



## Day 2: Nest (Hex Encoded Slitherlink)

Draw a singular, looping fence connecting some of the nodes in each grid. The fence must never fork, cross itself, or dead-end. Each hexagon with a clue must have a specific number of fence segments surrounding it. 0 and 3 have been provided. The letters H, R, N, and T represent the numbers 1, 2, 4, and 5 in some order, which is up to the solver to determine.



- H \_\_\_\_\_
- 0 0
- R \_\_\_\_\_
- N \_\_\_\_\_
- 3 3
- T \_\_\_\_\_

## Day 3: Wind

Here's a short and sweet puzzle for this prompt:

**WIND : MINNESOTA :: PAIN : ?**

## #EnigMarch

These puzzles were created with the #EnigMarch series of puzzle construction prompts. Search for the hashtag on social media for more from other puzzle authors.

## Support TG

This puzzle is patron-supported content. Visit my campaign at <https://patreon.com/davmillar> and pledge for special previews of future puzzle content.