

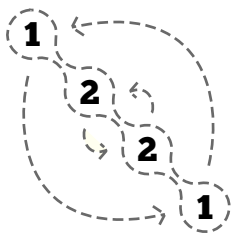
## Instructions

Complete the kakuro grids using standard rules for kakuro: use the digits 1 through 9, no repeated digits in a section of row or column between dark lines, and the digits must total to the sums provided.

Placement of digits in the 'spinners' with a dashed border must be 180 degree rotationally symmetric.

Grid sums (row sums above, column sums to the left):

- Row 1: 12, 45, 12, 8
- Row 2: 10, 22, 24
- Row 3: 16, 28, 16
- Row 4: 11, 39, 9
- Row 5: 23, 23, 7, 14
- Row 6: 10, 7, 16, 30, 24
- Row 7: 5, 12, 24, 30
- Row 8: 30, 16
- Row 9: 32, 21
- Row 10: 10



Grid sums (row sums above, column sums to the left):

- Row 1: 11, 10, 45
- Row 2: 16, 17, 11
- Row 3: 6, 20, 17, 13
- Row 4: 18, 13, 13, 10
- Row 5: 18, 10, 10
- Row 6: 9, 18, 14, 19, 10
- Row 7: 23, 21, 7
- Row 8: 16, 6
- Row 9: 7, 15

## Support TG

This puzzle is patron-supported content. Visit my campaign at <https://patreon.com/davmillar> and pledge for special previews of future puzzle content.