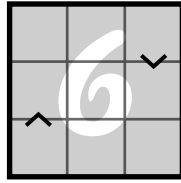


Advent Pieces

In today's puzzle piece for the sudoku calendar, greater-than sudoku clues have been given. The instructions for this clue were given on day 3.



6

This space intentionally left blank.

Oh, did I forget to mention that there are sub-puzzles this year?

Sub-Puzzle

This is an Area 51 where the loop must visit every node in the grid.

Solving this puzzle will aide you with the story logic portion of the #PuzzleAdventCalendar